

Technical specifications
(1/3)

Torres Clavé 1934

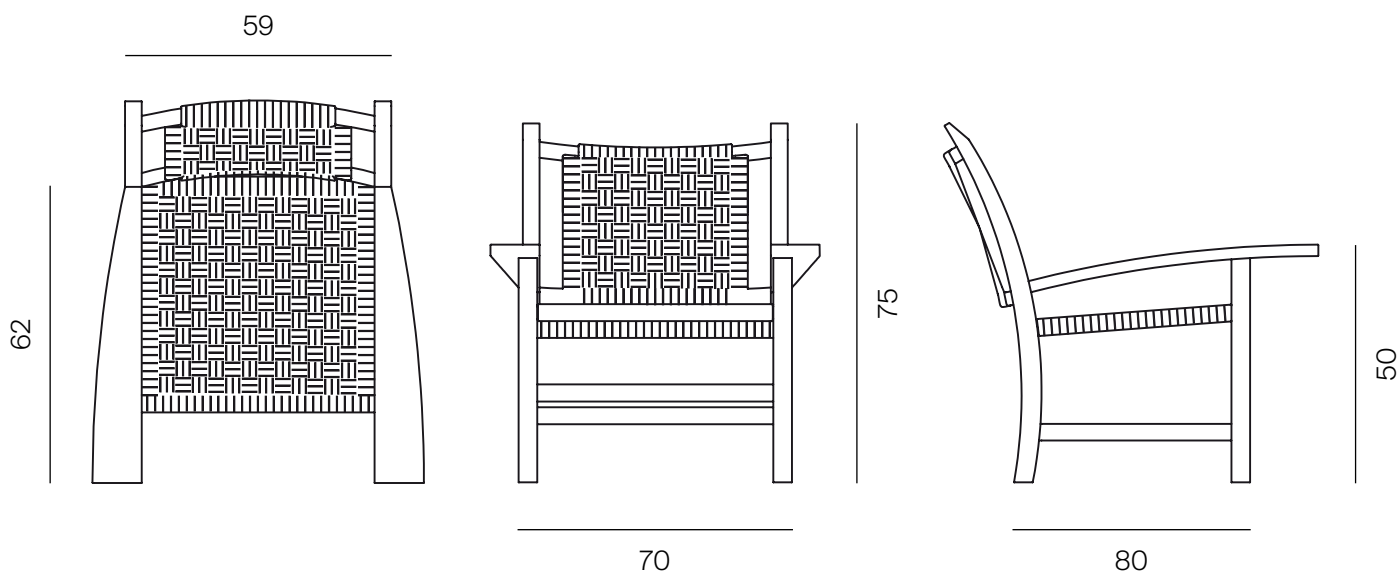
By Josep Torres Clavé



Mobles114

Technical specifications

(2/3)



*Metric unit: cm

PRODUCT

Units	Weight
1	12,5 kg

PACKAGING

Units	Weight	Dimensions	Volume
1	16,5 kg	90X79X121 cm	0,86 m ³

All packaging boxes are made of double recyclable cardboard.

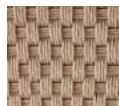
MATERIALS AND COLORS

Structure (wood)



Oak

Seat (cellulose fiber)



Rope fabric

Technical specifications

(3/3)

CERTIFICATIONS AND REGULATIONS

Wood: Forest Stewardship Council (FSC)

MATERIALS AND FINISHES

The production of this armchair is handcrafted.

Armchair made from a solid oak structure with glued joints and concealed metal elements.

Seat woven with paper cord, with a squared design.

Varnished with water-based varnish, without colouring, to preserve the natural colour of the wood. The procedure is scrubbing, two coats of primer and a final coat of water-based varnish.

This preserves the armchair from the action of atmospheric agents and also makes it more resistant.

MAINTENANCE

Clean with a damp cloth and mild soap. Rinse and dry with a dry cloth. Avoid abrasive products.